



**CENTENNIAL**  
*place*

WATERFRONT APARTMENTS  
— at the —  
LYKES STEAMSHIP DISTRICT



*Join us*



YOURLYKES.COM



# A COMFORTABLE RETREAT WITH EASY ACCESS TO ALL THE CITY HAS TO OFFER.

## *Residents will enjoy these on-site amenities:*

- › Rooftop patio with stunning river views
- › Community room
- › Off-street parking spaces available
- › On-site property management and maintenance offices
- › Walking distance to Walmart
- › Located with convenient access to all parts of New Orleans and the greater region via Tchoupitoulas St, Pontchartrain Expy, Crescent City Connection, I-10, Hwy 90 and an adjacent RTA stop
- › Envious location in the Lower Garden District
- › Planned community gardens

## *Each residence features:*

- › Energy Star kitchen appliances: range/oven, refrigerator, dishwasher, microwave
- › Energy Star front-loading washer and dryer
- › Ceiling fans
- › Exposed concrete floors
- › Wood cabinets
- › Windows with privacy blinds
- › Pre-wired cable and Internet
- › Sliding glass room dividers providing maximum flexibility in use of space
- › Low VOC finishes and maximum ventilation to promote a healthy living environment
- › LEED® design and construction principles

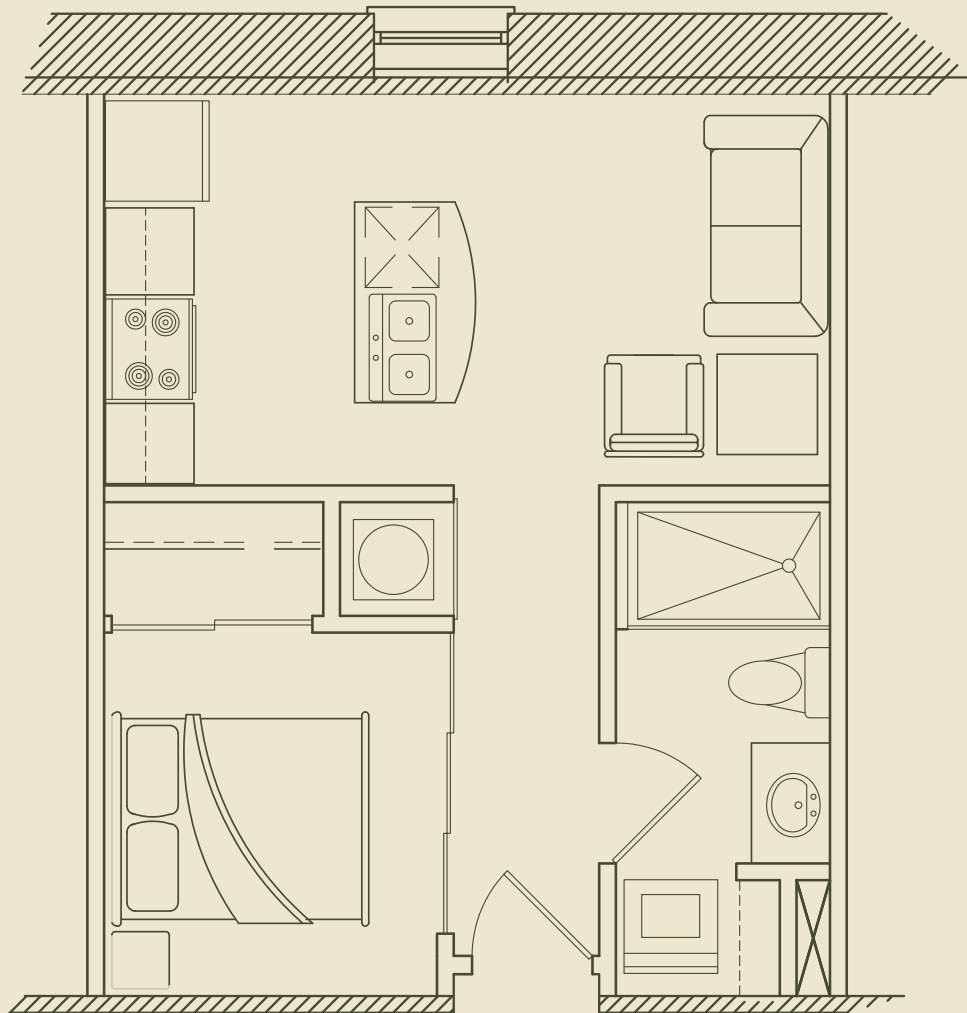
**1710 TCHOUPITOULAS**  
**STREET**  
**NEW ORLEANS, LA 70130**  
 **504-458-4352**

# Anchor

Junior 1 Bedroom / 1 Bathroom

450 Sq. Ft.

from \$\_\_\_\_\_ per month

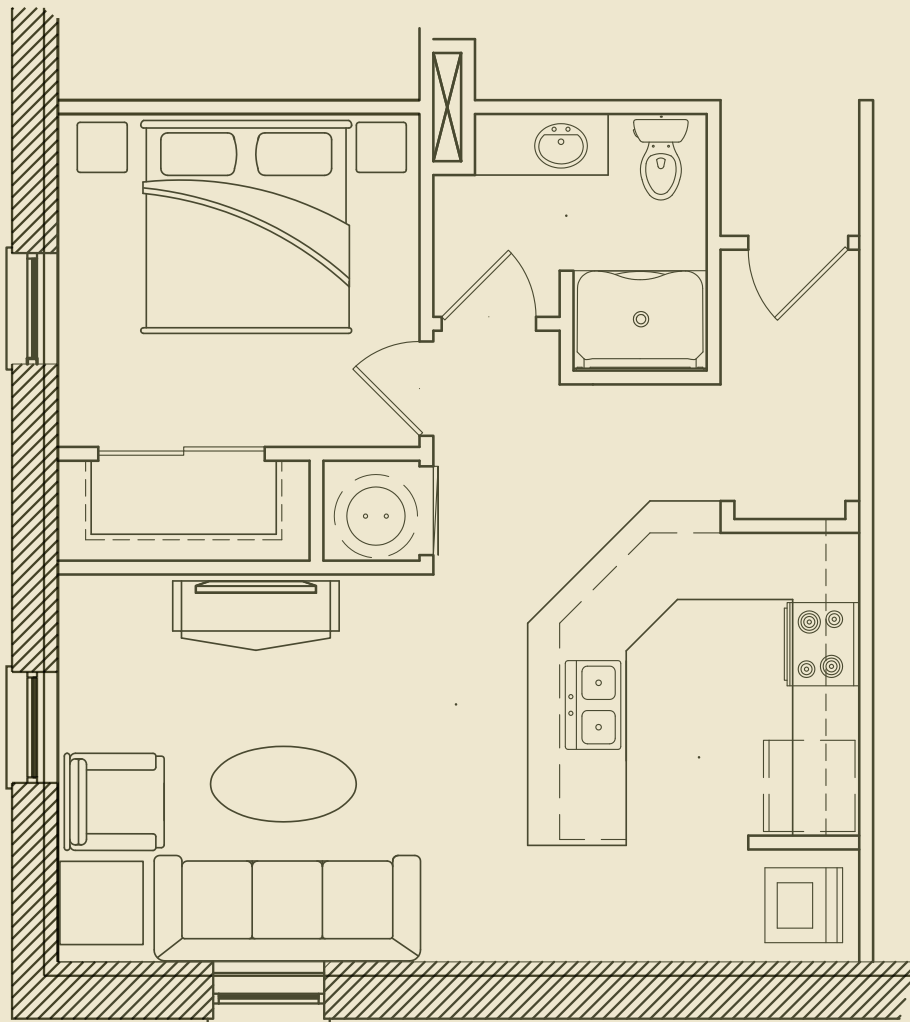


# Steamer

1 Bedroom / 1 Bathroom, Corner Unit

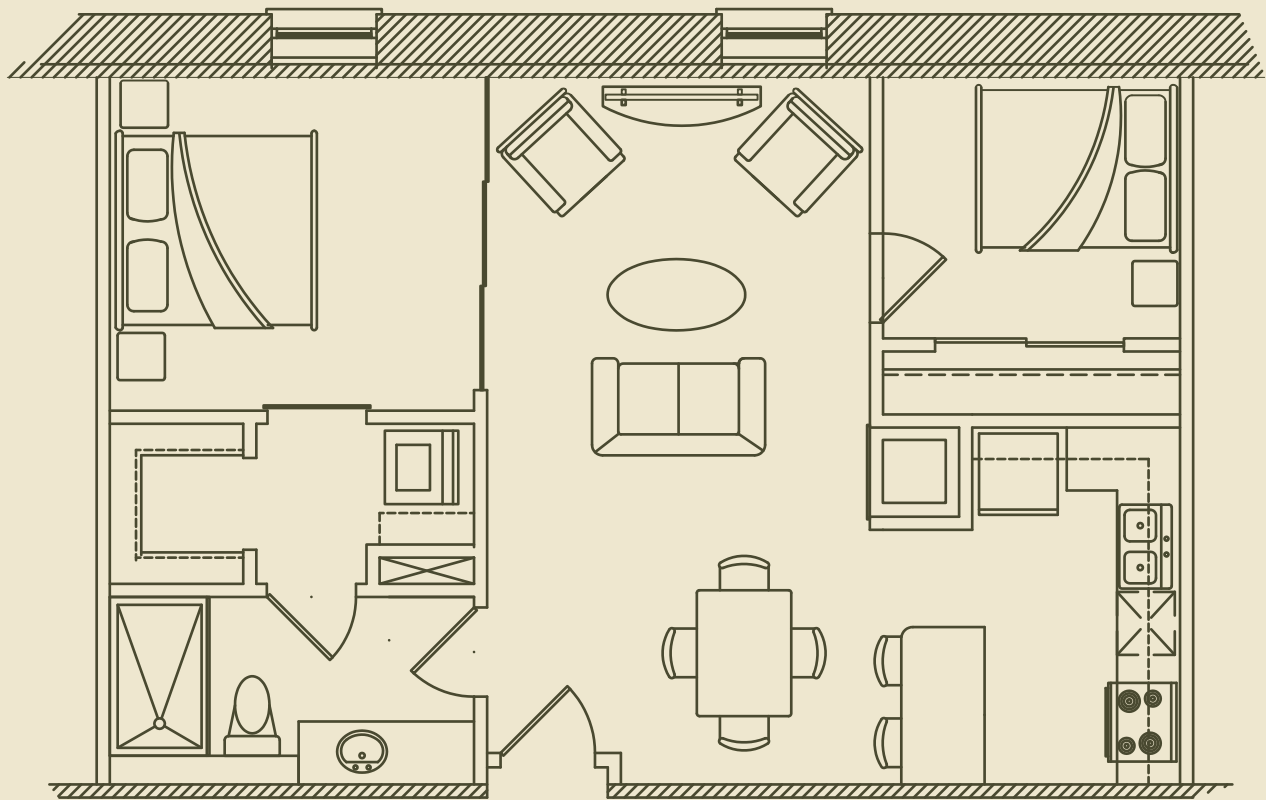
600 Sq. Ft.

from \$\_\_\_\_\_ per month



# Vessel

2 Bedroom / 1 Bathroom,  
800 Sq. Ft.  
from \$\_\_\_\_\_ per month



# Bateau

1 Bedroom / 1 Bathroom,

600 Sq. Ft.

from \$\_\_\_\_\_ per month

